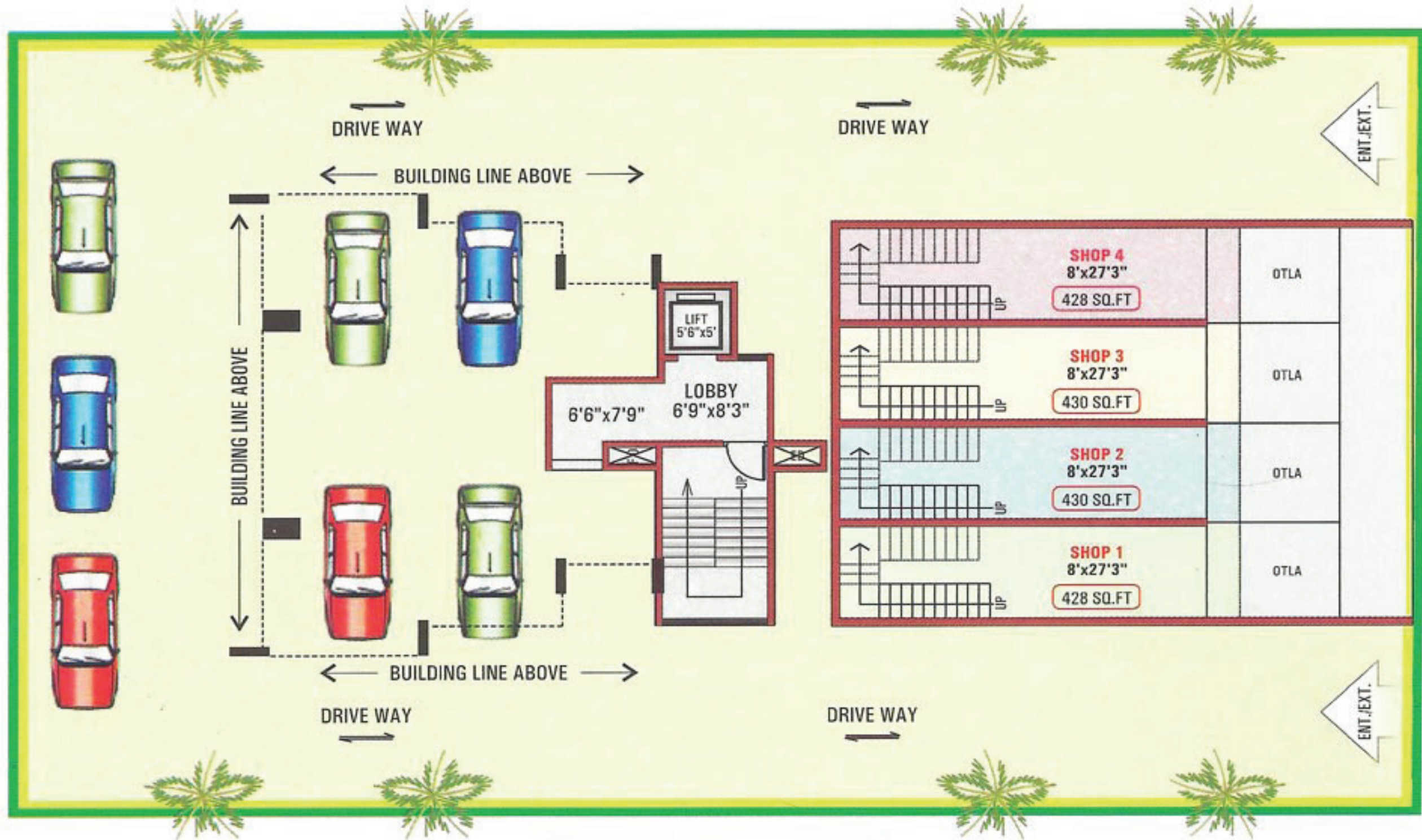


Devki's

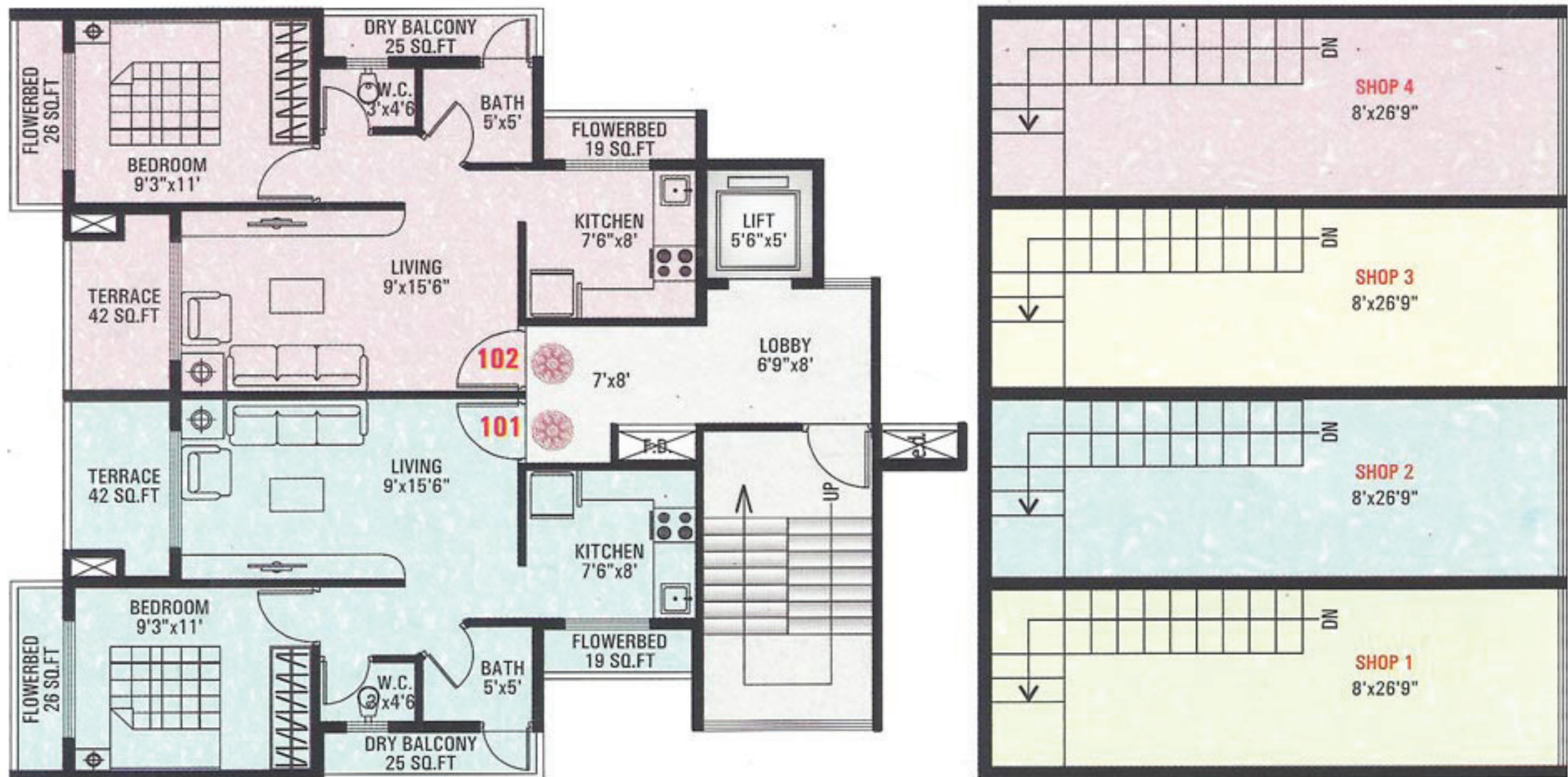
Park View



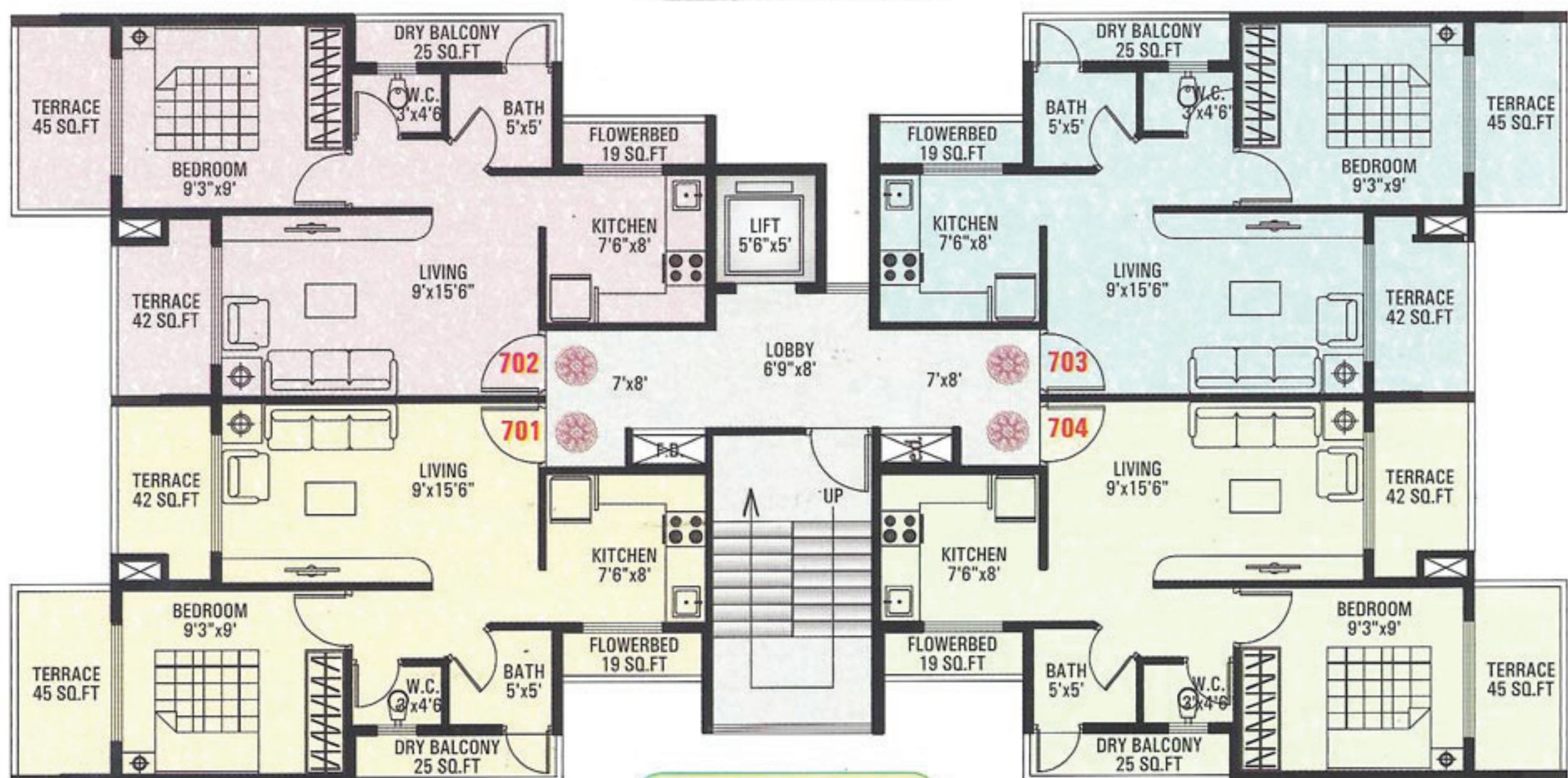
Plot No. 185, Sector-10, Kopra-Kharghar, Navi Mumbai.



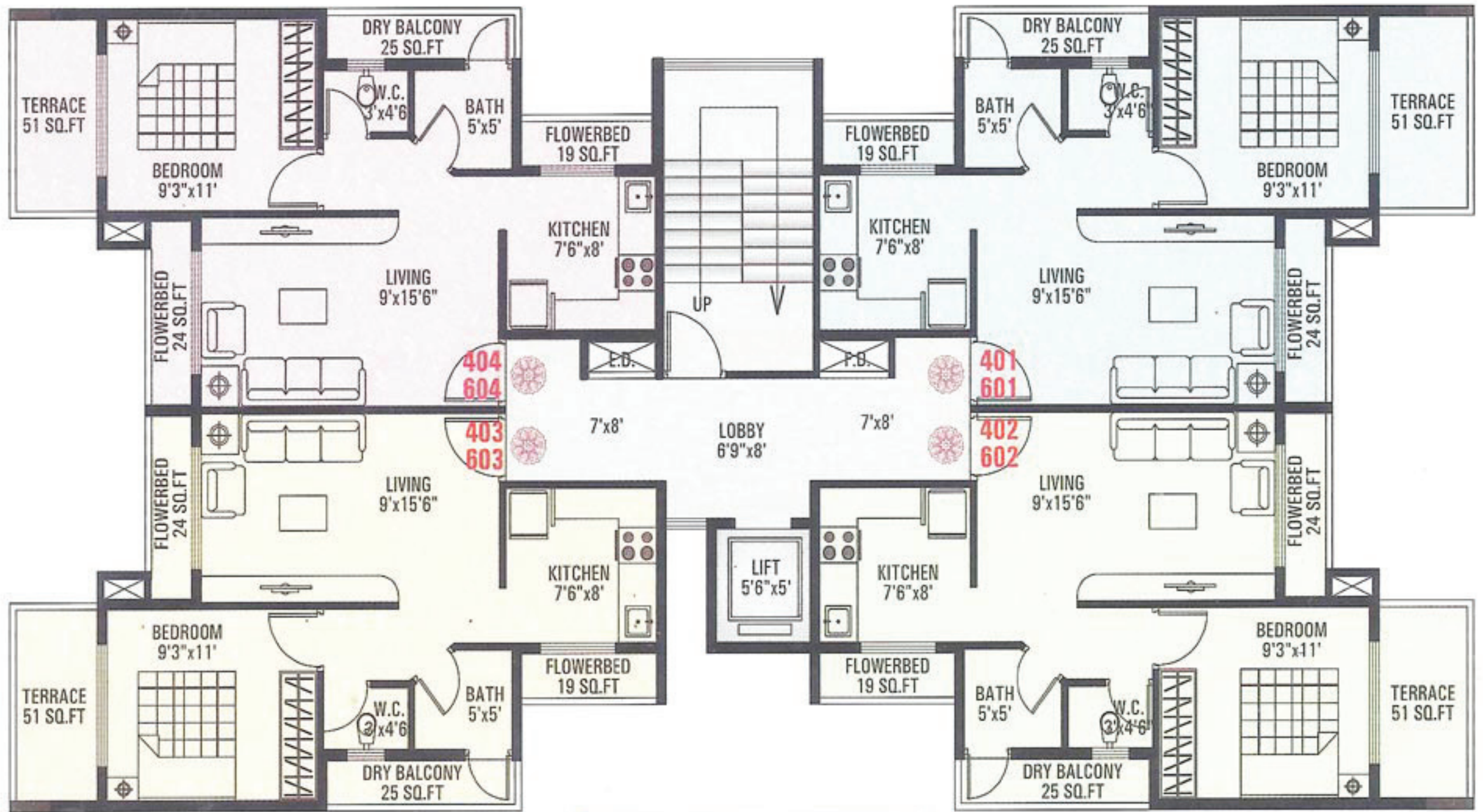
Ground Floor Plan



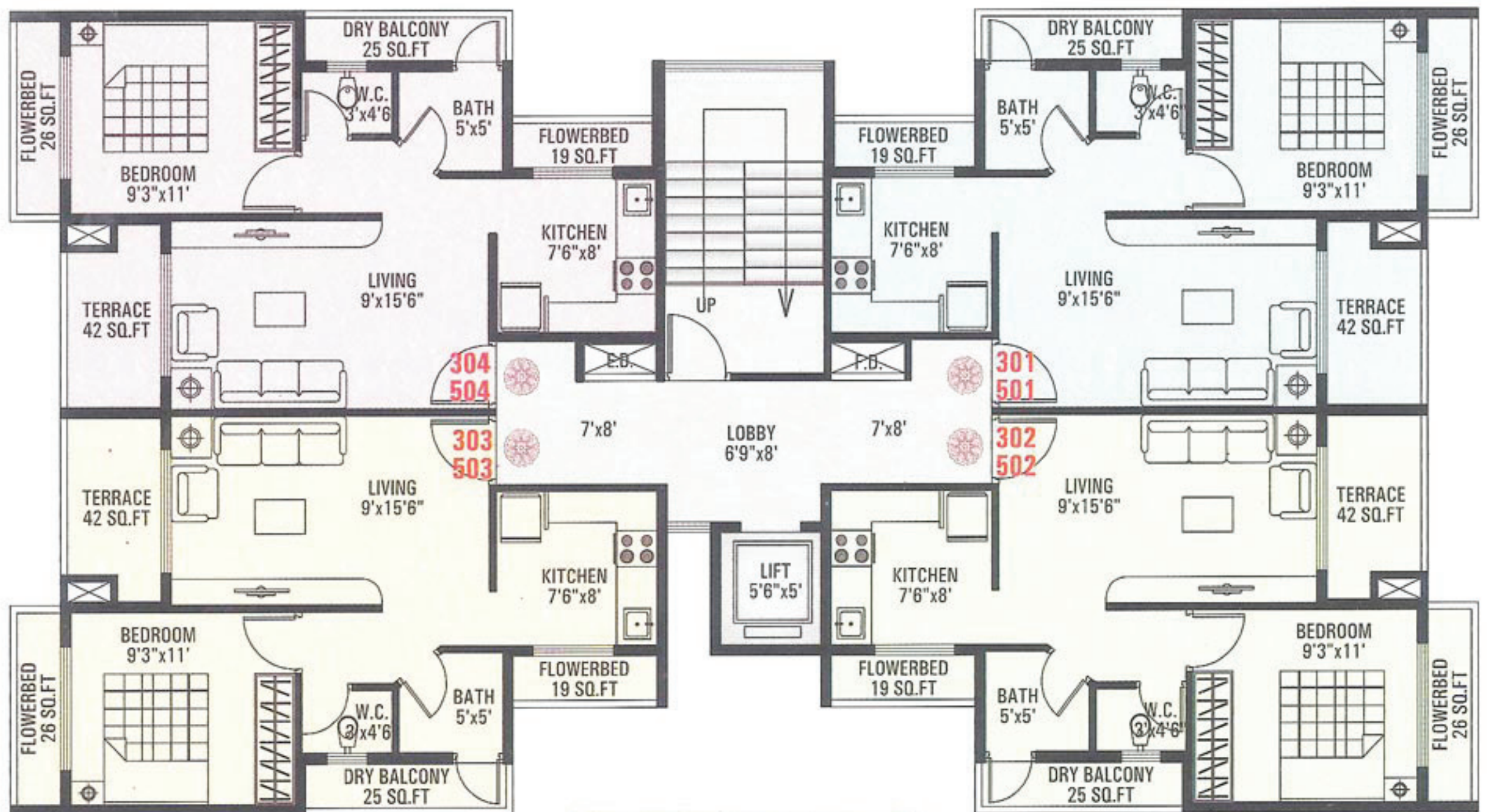
1st Floor Plan



7th Floor Plan



4th & 6th Floor Plan



3rd & 5th Floor Plan



LOCATION PLAN



List of Amenities

1. Porceleno Flooring in Living Rooms, Kitchen and Bedroom
2. Granite Kitchen Platform with Stainless Steel Sink
3. 4 Feet Height Glazed Tiles above Kitchen Platform
4. Full Height Glazed Tiles in Toilets and Bathroom upto Beam Level
5. All Internal Walls with Pop Finish & OBD Paint
6. All External Surface Painted with Good Quality Acrylic Paint
7. Concealed Copper Wiring with Modular Switches
8. Cable T.V. & Telephone Points in Living & Bedroom
9. A.C. Point in Bedroom
10. Concealed Plumbing with Premium Fittings
11. Provision for Washing Machine, Dry Balcony
12. Powder Coated Alluminium Sliding Windows
13. Tinted Glass in all windows
14. FRP Door for Bathroom & Toilets with Marble Frame
15. Reputed Make Lift
16. Ceramic Flooring on Attached Terraces
17. Attractive Elevation
18. Attractive Main Entrance Gate
19. Greeny Compound Wall Plantation
20. Finest Quality Tiles on Ground Floor Stilt Parking
21. Security Cabin of 24 Hours Security

Features

1. Ground + Seven Storey Building
2. Earthquake Resistant Structure
3. Exclusive All 1 B.H.K. With Natural Terrace & Dry Balcony With Natural Light & Cross Ventilation
4. Project is on 24 Mtr. Wide Road, 1.5 K.m. (Approx) near to Kharghar & Mansarovar (Kamote) Railway Station
5. Peaceful & Quite Atmosphere, pollution Free Environment
6. Near to Mumbai-Pune Highway
7. Ample- Stack Car Parking Facility
8. Diesel Generator Set for Common Area Lights, Elevators, Lifts & Water Pumps.
9. Advance Fire Fighting System
10. Intercom Security System.

Project By:

DOLPHIN ENTERPRISES
BUILDERS & DEVELOPERS

H-102, 1st Floor,
Nerul Station Complex,
Nerul (W), Navi Mumbai.
Tel: 2299 0924 Fax: 2771 7145
E-mail: dolphinb_d@yahoo.com
dolphinsraj@hotmail.com

Architect: SOYUZ TALIB
R.C.C. Consultant: STRUCTURAL CONCEPTS